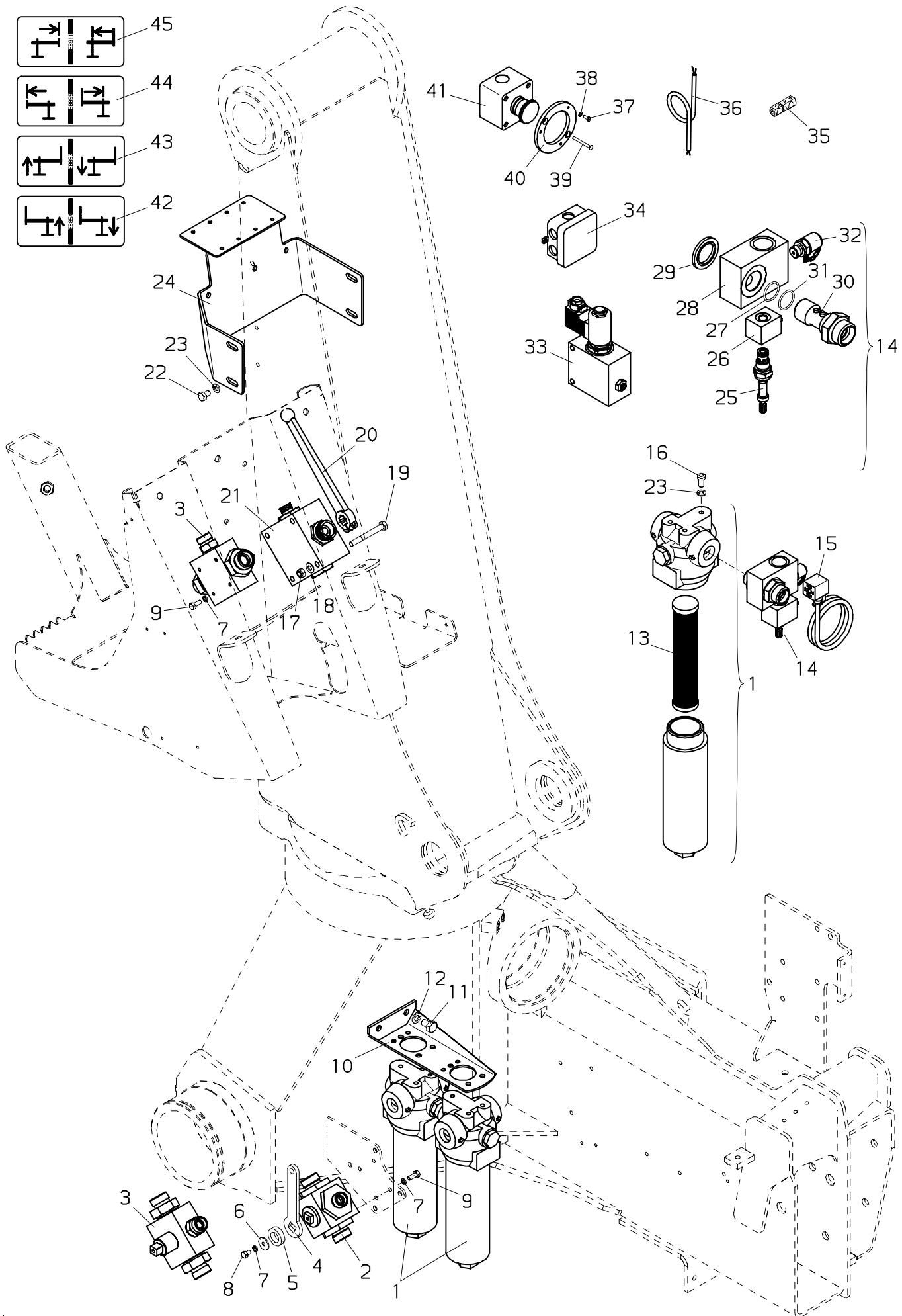


010.0400

11/97

PALFINGER

PK 16000 L



Nr. No. No.	Ersatzteil Nr. Sparepart no. No Piece de rechange	Stk. Qty. Nbre.	Teilebezeichnung	Description	Nomenclature	Abmessung Dimension Dimension
1	EA1391 TD 513	2	Hochdruckfilter Dichtsatz (für EA1391)	High press. filter Seal kit (for EA1391)	Filtre haute press. Pochette de joints (pour EA1391)	
2	EV1706	1	Wegeventil (—>9673888)	Valve (—>9673888)	Soupape (—>9673888)	
3	EV1374A TD 712	1	Wegeventil (9673889—>) Dichtsatz (für EV1374A)	Valve (9673889—>) Seal kit (for EV1374A)	Soupape (9673889—>) Pochette de joints (pour EV1374A)	
4	HT1758	1	Schalthebel	Change lever	Levier de change	
5	EK 338	1	Scheibe	Washer	Rondelle	D 16 DIN 7989
6	EK 261	1	Scheibe	Washer	Rondelle	D 6,6 DIN 440
7	EQ 012	5	Federring	Spring washer	Rondelle	B 6 DIN 7980
8	ES 124	1	Schraube	Screw	Vis	M 6x10 DIN 933
9	ES 144	4	Schraube	Screw	Vis	M 6x16 DIN 933
10	HXE 636	1	Konsole	Bracket	Console	2K
11	ES 049	2	Schraube	Screw	Vis	M 10x16 DIN 933
12	EQ 008	2	Federring	Spring washer	Rondelle	B 10 DIN 127
13	BZ204S	1	Filtereinsatz,kpl.	Filter element,cpl.	Cartouche de filtre, cplt	
14	UV256A–12V	1	Not–Aus Ventil	Emergency cut–off valve	Soupape d' arret d' urgence	12 V
14	UV256A–26V	1	Not–Aus Ventil	Emergency cut–off valve	Soupape d'arret d'urgence	26 V
15	EEA 772	1	Stecker mit Kabel	Plug with cable	Fiche avec cable	1.5 m
16	ES 051	8	Schraube	Screw	Vis	M 8x16 DIN 7984
17	EM 026	2	Mutter	Nut	Ecrou	M 8 DIN 985
18	EK 003	2	Scheibe	Washer	Rondelle	D 8 DIN 125
19	ES 513	2	Schraube	Screw	Vis	M 8x70 DIN 931
20	EZ 632	1	Handhebel	Hand lever	Levier a main	
21	EV1374 TD 269	1	Wegeventil (—>9673888) Dichtsatz (für EV1374)	Valve (—>9673888) Seal kit (for EV1374)	Soupape (—>9673888) Pochette de joints (pour EV1374)	
22	ES 255	4	Schraube	Screw	Vis	M 8x12 DIN 933
23	EQ 001	12	Federring	Spring washer	Rondelle	B 8 DIN 127
24	HXE 934	1	Schieberkonsole	Bracket	Console	
25	EV2824 TD 557	1	Magnetventil Dichtsatz (für EV2824)	Magnet valve Seal kit (for EV2824)	Soupape magnetique Pochette de joints (pour EV2824)	
26	EV2811	1	Magnetspule	Magnet coil	Bobine magnetique	12 V
26	EV2812	1	Magnetspule	Magnet coil	Bobine magnetique	26 V
27	EO 142	1	O–Ring	O–ring	Joint torique	D 22x2
28	HG 140	1	Gehäuse	Housing	Carter	
29	ED 368	1	Dichtkantring	Sealing ring	Rondelle de joint	KD 3/4"
30	HLA 827	1	Hohlschraube	Female screw	Vis creuse	
31	ER 843	1	Stützring	Back up ring	Support de joint	D 26,70x2
32	EA 716	1	Prüfverschraubung	Pressure gauge conn.	Raccord de manometre	1/4"